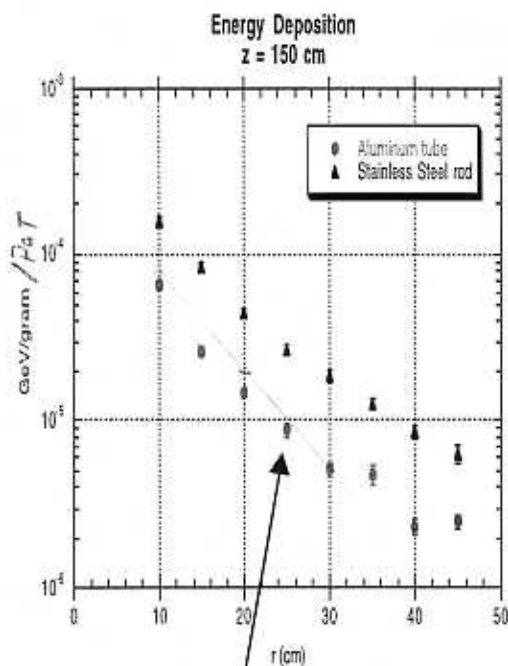
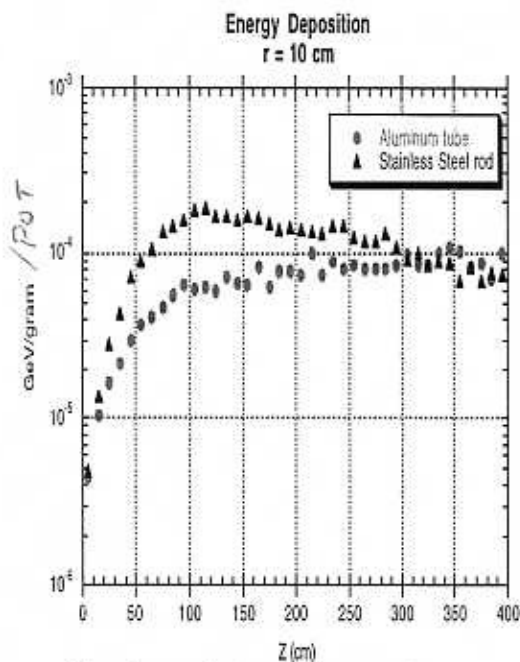
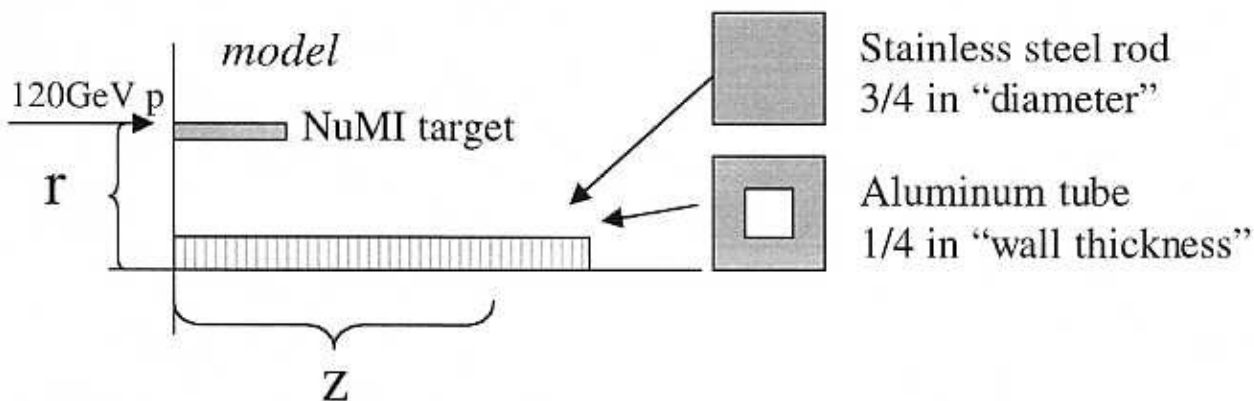


Energy deposition in target support structure

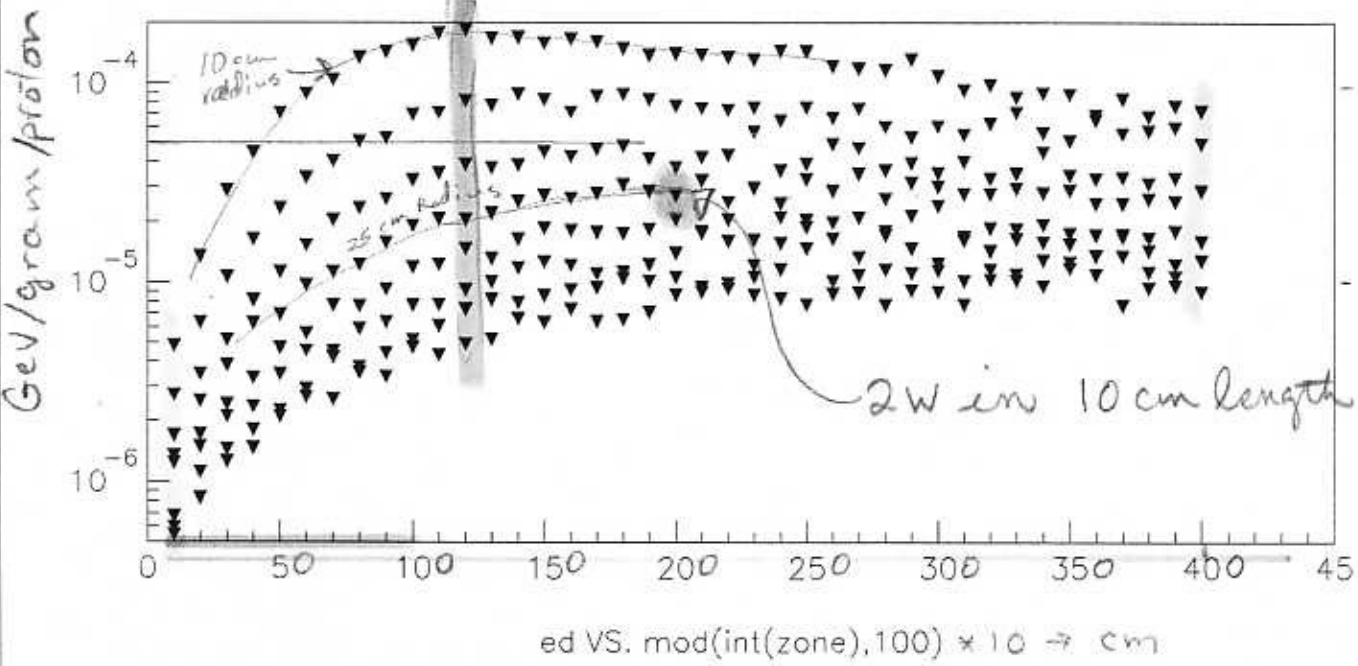
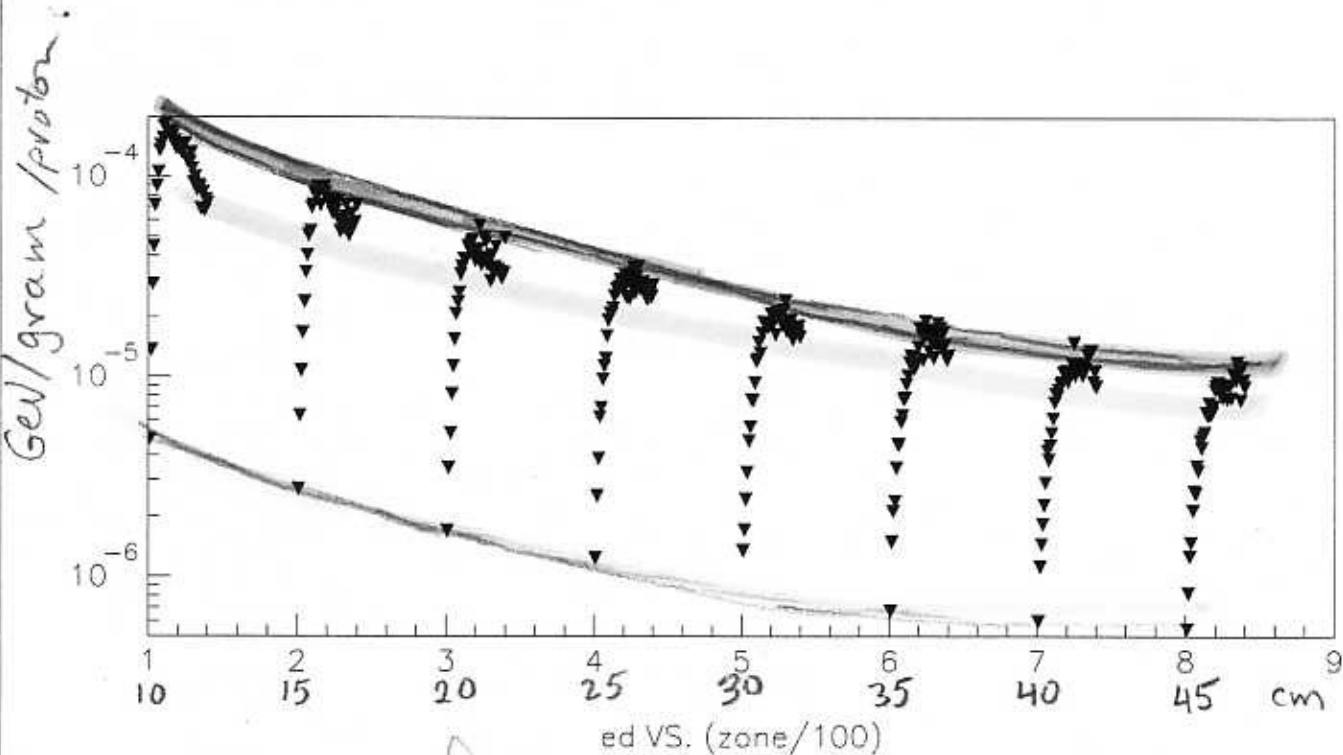


Each point represents a "zone" of 10 cm in length.

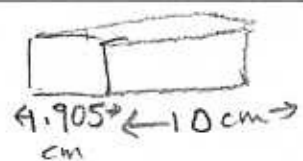
| Material | ρ (g/cm ³) | Vol (cm ³) | Watts/cm at z=150 cm; r=25 cm | Watts cm ³ | Watts gram |
|-----------------|--------------------------------|---------------------------|-------------------------------------|--------------------------|---------------|
| Aluminum | 2.7 | 3.23 | 0.28 | 0.087 | 0.032 |
| Stainless Steel | 8.02 | 3.63 | 2.8 | 0.77 | 0.096 |

(for 4e13 ppp)
 1.87 sec rep. rate

Energy deposition in SS Rods



$\rho = 8.02 \text{ g/cc}$
 Zone Volume = 36.29 cm^3



Al tube

